

ICE® Model 128C Hydraulic Vibratory Driver/ Extractor with Model 1200G Power Unit



Highest centrifugal force (3560 kN) in its class.

Design combines high eccentric moment (126 kg-m) and suspended weight with caisson clamp under 13600 kg.

Twin 444 kW CAT C15 Tier 3 (Stage IIIA) engines meet all EPA & EU emission regulations.

Up to 1250 kN line pull for extraction.



Patented Dual-pull™ suppressor provides maximum vibration isolation during driving and light extraction combined with high pull capability for tough extraction jobs.

Optional bias weights up to 2495 kg increases pile penetration rates in difficult soils.

Full range of clamps available for sheet piling, H-Beams, pipe & caissons.

Maximum efficiency and reliability ensured by our open-loop hydraulic system. Highest quality reliable piston pumps and motors.

Remote-control pendant for vibrator and clamp with emergency stop. Engine speed control for fuel efficiency.

Adaptable for underwater operation.

Designed and manufactured in the USA by ICE®, world leader in cost-effective foundation equipment since 1974.

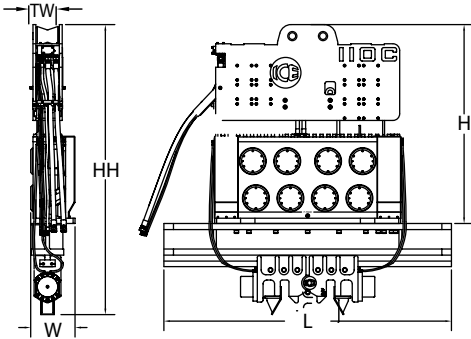


ICE® Model 128C

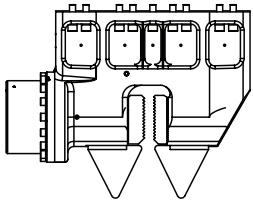
Hydraulic Vibratory Driver/ Extractor with Model 1200G Power Unit



Dimensions

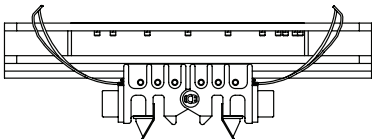


Clamps & Accessories



Model 385 Sheeting Clamp

Clamping force
385 tons, 3425 kN
Weight
5,400 lbs, 2455 kg



10' Caisson Beam with Model 142BH Caisson Clamps

Clamping force
284 tons, 2520 kN
Weight
10,242 lbs, 4546 kg

Other Model 128C Accessories

7' Quad Plate Bias Weights
12' Quad beam Wireless remote

Model 128C Vibrator Specifications

Eccentric moment	126 kg-m
Maximum frequency	1600 vpm
Centrifugal force	3560 kN
Amplitude (free w/o clamp)	40 mm
Standard line pull for extracting	1020 kN
Maximum line pull for extracting	1250 kN
Weight (no clamp or hoses)	8390 kg
Non-vibrating weight	2175 kg
Height without clamp (H)	2630 mm
Length (L)	2470 mm
Width (W)	585 mm
Throat width (TW)	387 mm
Hydraulic hose length	46 m
Hydraulic hose weight	1090 kg
Height with sheeting clamp* (HH)	3800 kg
Weight with sheeting clamp & 1/2 hoses*	11385 kg
Height with beam & caisson clamps* (HH)	3825 mm
Weight with beam & caisson clamps*	13590 kg

* See "Clamps and Accessories Manual" for in-depth description

Model 1200G Power Unit Specifications

Engine	Twin CAT C15
Power	887 kW
Operating speed	1800 rpm
Maximum motors pressure	380 bar
Motors flow (no load)	1000 lpm
Clamp pressure	310 bar
Clamp flow	22 lpm
Weight (w/ full fluid & 1/2 fuel)	14740 kg
Length	5700 mm
Width	2135 mm
Height	2900 mm
Hydraulic reservoir	2080 liters
Fuel capacity	1625 liters

International Construction Equipment, Inc.
301 Warehouse Drive
Matthews, NC 28104 USA
888-ICE-USA1 / 704-821-8200
sales@iceusa.com / www.iceusa.com

Constant improvement and engineering progress make it necessary that ICE®, Inc reserve the right to make specification changes without notice. Please consult ICE® for the latest available information.

©International Construction Equipment, Inc. All rights reserved. January 2013.

UV110C_1200G_Jan2013