

ICE® Model 16C Hydraulic Vibratory Driver/Extractor with Model 230M Power Unit



Patented design combines high eccentric moment (16 kg-m) and low suspended weight with clamp (2110 kg).

Lighter weight provides for increased reach or use with smaller cranes.

Reduced height allows better access in low-overhead situations.

Up to 430 kN line pull for extraction.

Patented Dual-pull™ suppressor provides maximum vibration isolation during driving and light extraction combined with high pull capability for tough extraction jobs.

168 kW CAT C6.6 Tier 3 (State IIIA) engine meets all EPA & EU emission regulations.

Optional 928 kg bias weights increase pile penetration rates in difficult soils.

Full range of clamps available for sheet piling, H-Beams, pipe & caissons and timber & concrete piles.

Maximum efficiency and reliability are provided by an open-loop hydraulic system and application proven piston pumps and motor.

Remote-control pendant for vibrator and clamp with emergency stop. Engine speed control for fuel efficiency.

Adaptable for underwater, low headroom or box leads operation.

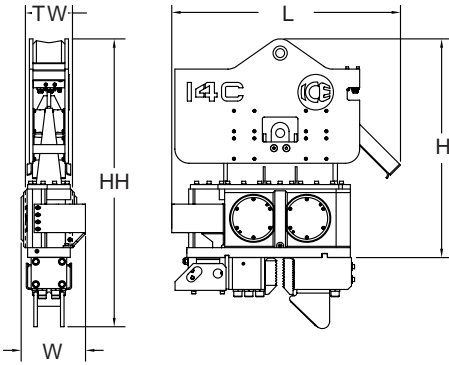
Designed and manufactured in the USA by ICE®, world leader in cost-effective foundation equipment since 1974.



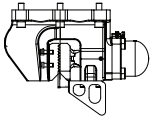
ICE® Model 16C Hydraulic Vibratory Driver/ Extractor with Model 230M Power Unit



Dimensions

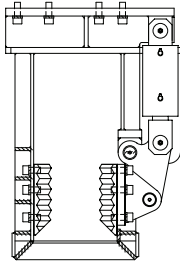


Clamps & Accessories



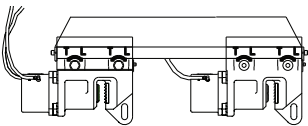
Model 90 Sheeting Clamp

Clamping force
90 tons, 800 kN
Weight
1065 lbs, 483 kg



Model 40 Wood, Concrete & Pipe Clamp

Clamping force
40 tons, 355 kN
Weight
3,220 lbs, 1460 kg



3' Caisson Beam with Model 100BH Caisson Clamps

Clamping force
220 tons, 1950 kN
Weight
3,010 lbs, 1376 kg

Other Model 16C Accessories

Bias weights
Vibrator stand
5' Caisson Beam

Model 16C Vibrator Specifications

Eccentric moment	16 kg-m
Maximum frequency	1900 vpm
Centrifugal force	640 kN
Amplitude (free w/o clamp)	30 mm
Standard line pull for extracting	430 kN
Maximum line pull for extracting	430 kN
Weight (no clamp or hoses)	1716 kg
Non-vibrating weight	635 kg
Height without clamp (H)	1565 mm
Length (L)	1635 mm
Width (W)	460 mm
Throat width (TW)	337 mm
Hydraulic hose length	30 m
Hydraulic hose weight	385 kg
Height with sheeting clamp* (HH)	2060 mm
Weight with sheeting clamp & 1/2 hoses*	2395 kg
Height with beam & caisson clamps*	2400 mm
Weight with beam & caisson clamps*	3260 kg

* See "Clamps and Accessories Manual" for in-depth description

Model 230M Power Unit Specifications

Engine	CAT C6.6
Power	168 kW
Operating speed	2100 rpm
Max. motors pressure	310 bar
Motors flow (no load)	265 lpm
Clamp pressure	310 bar
Clamp flow	25 lpm
Weight (w/ full fluid & 1/2 fuel)	4225 kg
Length	2800 mm
Width	1475 mm
Height	1960 mm
Hydraulic reservoir	1040 liters
Fuel capacity	460 liters

International Construction Equipment, Inc.
301 Warehouse Drive
Matthews, NC 28104 USA
888-ICE-USA1 / 704-821-8200
sales@iceusa.com / www.iceusa.com

Constant improvement and engineering progress make it necessary that ICE®, Inc reserve the right to make specification changes without notice. Please consult ICE® for the latest available information.

©International Construction Equipment, Inc. All rights reserved. January 2013.

UV14C_230M_Jan 2013