

ICE® Model 32C Hydraulic Vibratory Driver/ Extractor with Model 350G Power Unit



Patented design combines high eccentric moment (32 kg-m) and suspended weight with clamp under 4445 kg.

Lighter weight provides for increased reach or use with smaller cranes.
Reduced height for better access in low-overhead situations.

Up to 490 kN line pull for extraction.

261 kW CAT C9 Tier 3 (State IIIA) engine meets all EPA & EU emission regulations.

Optional 1345 kg of bias weight increases pile penetration rates in difficult soils.

Maximum efficiency and reliability ensured by our open-loop hydraulic system. Highest quality, reliable piston pumps and motor

Remote-control pendant for vibrator and clamp with emergency stop. Engine speed control for fuel efficiency.

Full range of clamps available for sheet piling, H-Beams, pipe & caissons and timber & concrete piles.

Adaptable for underwater, low headroom or box leads operation.

Designed and manufactured in the USA by ICE®, world leader in cost-effective foundation equipment since 1974.

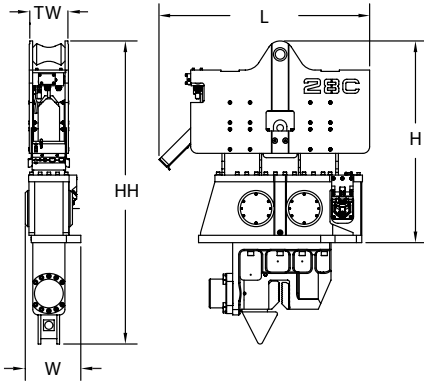


ICE® Model 32C

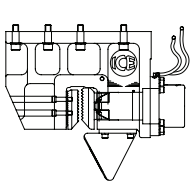
Hydraulic Vibratory Driver/ Extractor with Model 350G Power Unit



Dimensions

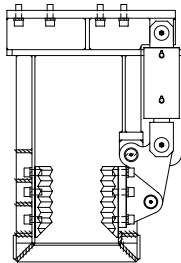


Clamps & Accessories



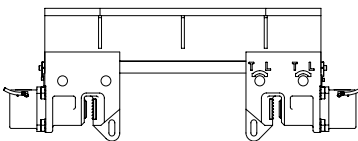
**Model 140C
Sheeting Clamp**

Clamping force
140 tons, 1245 kN
Weight
2,200 lbs, 1000 kg



**Model 40
Wood, Concrete
& Pipe Clamp**

Clamping force
40 tons, 355 kN
Weight
3,220 lbs, 1460 kg



**6.5' Caisson Beam with
Model 100BH Caisson Clamps**

Clamping force
220 tons, 1975 kN
Weight
4,610 lbs, 2090 kg

Other Model 32C Accessories

10' Clamp extension
90° Turning plate
Bias weights
Vibrator stand
Wireless remote

Model 32C Vibrator Specifications

Eccentric moment	32 kg-m
Maximum frequency	1700 vpm
Centrifugal force	1023 kN
Amplitude (free w/o clamp)	30 mm
Standard line pull for extracting	490 kN
Maximum line pull for extracting	490 kN
Weight (no clamp or hoses)	3121 kg
Non-vibrating weight	971 kg
Height without clamp (H)	1915 mm
Length (L)	2000 mm
Width (W)	527 mm
Throat width (TW)	362 mm
Hydraulic hose length	46 m
Hydraulic hose weight	646 kg
Height with sheeting clamp* (HH)	2877 mm
Weight with sheeting clamp & 1/2 hoses*	4,442 kg
Height with beam & caisson clamps* (HH)	2750 mm
Weight with beam & caisson clamps*	5535 kg

* See "Clamps and Accessories Manual" for in-depth description

Model 350G Power Unit Specifications

Engine	CAT C9
Power	261 kW
Operating speed	1850 rpm
Max. motors pressure	380 bar
Motors flow (no load)	367 lpm
Clamp pressure	310 bar
Clamp flow	24 lpm
Weight (w/ full fluid & 1/2 fuel)	5150 kg
Length	3300 mm
Width	1600 mm
Height	2200 mm
Hydraulic reservoir	1040 liters
Fuel capacity	445 liters

International Construction Equipment, Inc.
301 Warehouse Drive
Matthews, NC 28104 USA
888-ICE-USA1 / 704-821-8200
sales@iceusa.com / www.iceusa.com

Constant improvement and engineering progress make it necessary that ICE®, Inc reserve the right to make specification changes without notice. Please consult ICE® for the latest available information.

©International Construction Equipment, Inc. All rights reserved. January 2013.

UV28C_350G_Jan2013