

# ICE® Model 52B Hydraulic Vibratory Driver/ Extractor with Model 595G Power Unit



- Highest frequency (1800 vpm) and centrifugal force (1789 kN) in its class.
- 444 kW CAT C15 Tier 3 (Stage IIIA) engine meets all EPA & EU emission regulations.
- Up to 900 kN line pull for extraction.

Optional bias weights up to 2495 kg increases pile penetration rates in difficult soils.

Maximum efficiency and reliability ensured by our open-loop hydraulic system. Highest quality, reliable piston pumps and motors.

Remote-control pendant for vibrator and clamp with emergency stop. Engine speed control for fuel efficiency.

Full range of clamps available for sheet piling, H-Beams, pipe & caissons and timber & concrete piles.

Adaptable for underwater, low headroom or box leads operation.

Heavy steel enclosure and fuel-tank subbase protect power unit.

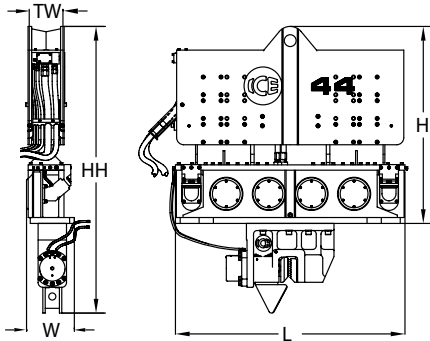
Designed and manufactured in the USA by ICE®, world leader in cost-effective foundation equipment since 1974.



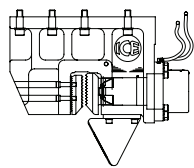
# ICE® Model 52B Hydraulic Vibratory Driver/ Extractor with Model 595G Power Unit



## Dimensions

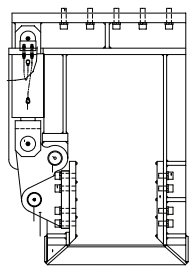


## Clamps & Accessories



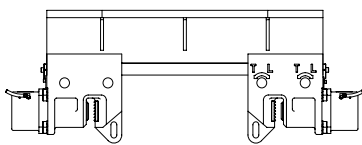
### Model 140C Sheeting Clamp

Clamping force  
140 tons, 1245 kN  
Weight  
2,200 lbs, 1000 kg



### Model 85 Wood, Concrete & Pipe Clamp

Clamping force  
85 tons, 756 kN  
Weight  
6,500 lbs, 2950 kg



### 6.5' Caisson Beam with Model 100BH Caisson Clamps

Clamping force  
220 tons, 1975 kN  
Weight  
4,610 lbs, 2090 kg

### Other Model 52B Accessories

12' Caisson beams	26" leads sled
10' Clamp extension	Low-headroom suppressor
90° Turning plate	Vibrator stand
Bias weights	Wireless remote

## Model 52B Vibrator Specifications

Eccentric moment	51 kg-m
Maximum frequency	1800 vpm
Centrifugal force	1789 kN
Amplitude (free w/o clamp)	28 mm
Standard line pull for extracting	600 kN
Maximum line pull for extracting	900 kN
Weight (no clamp or hoses)	5650 kg
Non-vibrating weight	2070 kg
Height without clamp (H)	2135 mm
Length (L)	2485 mm
Width (W)	530 mm
Throat width (TW)	362 mm
Hydraulic hose length	46 m
Hydraulic hose weight	705 kg
Height with sheeting clamp* (HH)	3096 mm
Weight with sheeting clamp & 1/2 hoses*	7000 kg
Height with beam & caisson clamps* (HH)	2784 mm
Weight with beam & caisson clamps*	8090 kg

\* See "Clamps and Accessories Manual" for in-depth description

## Model 595G Power Unit Specifications

Engine	CAT C15
Power	444 kW
Operating speed	1800 rpm
Max. motors pressure	380 bar
Motors flow (no load)	600 lpm
Clamp pressure	310 bar
Clamp flow	21 lpm
Weight (w/ full fluid & 1/2 fuel)	7420 kg
Length	4040 mm
Width	1855 mm
Height	2540 mm
Hydraulic reservoir	1630 liters
Fuel capacity	570 liters

International Construction Equipment, Inc.  
301 Warehouse Drive  
Matthews, NC 28104 USA  
888-ICE-USA1 / 704-821-8200  
sales@iceusa.com / www.iceusa.com

Constant improvement and engineering progress make it necessary that ICE®, Inc reserve the right to make specification changes without notice. Please consult ICE® for the latest available information.

©International Construction Equipment, Inc. All rights reserved. January 2013.