

# ICE® Model 78C Hydraulic Vibratory Driver/ Extractor with Model 800G Power Unit



- Highest frequency (1600 vpm) and centrifugal force (2135 kN) in its class.
- 597kW CAT C18 Tier 2 (Stage II) engine meets all EPA & EU emission regulations.
- Up to 1125 kN line pull for extraction.



Patented Dual-pull™ suppressor provides maximum vibration isolation during driving and light extraction combined with high pull capability for tough extraction jobs.

Optional bias weights up to 2495 kg increases pile penetration rates in difficult soils.

Maximum efficiency and reliability ensured by our open-loop hydraulic system. Highest quality, reliable piston pumps and motors.

Remote-control pendant for vibrator and clamp with emergency stop. Engine speed control for fuel efficiency.

Full range of clamps available for sheet piling, H-Beams, pipe & caissons.

Adaptable for underwater, low headroom or box leads operation.

Heavy steel enclosure and fuel-tank subbase protect power unit.

Designed and manufactured in USA by ICE®, world leader in cost-effective foundation equipment since 1974.

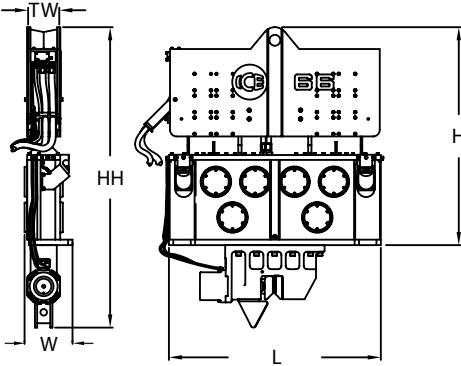


# ICE® Model 78C

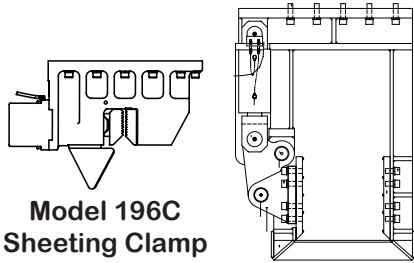
## Hydraulic Vibratory Driver/ Extractor with Model 800G Power Unit



### Dimensions



### Clamps & Accessories

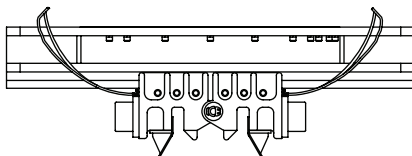


**Model 196C  
Sheeting Clamp**

Clamping force  
196 tons, 1744 kN  
Weight  
2,900 lbs, 1315 kg

**Model 85  
Wood, Concrete  
& Pipe Clamp**

Clamping force  
85 tons, 756 kN  
Weight  
6,500 lbs, 2950 kg



**10' Caisson Beam with  
Model 142BH Caisson Clamps**

Clamping force  
284 tons, 2520 kN  
Weight  
10,242 lbs, 4546 kg

### Other Model 78C Accessories

6' & 12' Caisson beams  
10' Clamp extension  
Wireless Remote  
90° Turning plate  
Bias weights  
Vibrator stand  
Sled for 32" leads

### Model 78C Vibrator Specifications

Eccentric moment	76 kg-m
Maximum frequency	1600 vpm
Centrifugal force	2135 kN
Amplitude (free w/o clamp)	31 mm
Standard line pull for extracting	850 kN
Maximum line pull for extracting	1125 kN
Weight (no clamp or hoses)	6920 kg
Non-vibrating weight	2070 kg
Height without clamp (H)	2550 mm
Length (L)	2485 mm
Width (W)	530 mm
Throat width (TW)	362 mm
Hydraulic hose length	46 m
Hydraulic hose weight	1090 kg
Height with sheeting clamp* (HH)	3515 mm
Weight with sheeting clamp & 1/2 hoses*	8735 kg
Height with beam & caisson clamps* (HH)	3825 mm
Weight with beam & caisson clamps*	12115 kg

\* See "Clamps and Accessories Manual" for in-depth description

### Model 800G Power Unit Specifications

Engine	CAT C18
Power	597 kW
Operating speed	1800 rpm
Maximum motors pressure	360 bar
Motors flow (no load)	880 lpm
Clamp pressure	310 bar
Clamp flow	21 lpm
Weight (w/ full fluid & 1/2 fuel)	12020 kg
Length	5540 mm
Width	2035 mm
Height	2630 mm
Hydraulic reservoir	2080 liters
Fuel capacity	750 liters

International Construction Equipment, Inc.  
301 Warehouse Drive  
Matthews, NC 28104 USA  
888-ICE-USA1 / 704-821-8200  
sales@iceusa.com / www.iceusa.com

Constant improvement and engineering progress make it necessary that ICE®, Inc reserve the right to make specification changes without notice. Please consult ICE® for the latest available information.

©International Construction Equipment, Inc. All rights reserved. January 2013.