



WWW.ICEUSA.COM  
888-ICE-USA1

# ICE® PILEMER MODEL IP7 (DKH-7U) HYDRAULIC IMPACT PILE HAMMER



Simple, proven, reliable single-acting design  
Variable stroke ranges from 0.7' to 4' (200-1200mm)  
High-energy transfer for maximum production  
Variable stroke avoids damaging impact velocities to concrete (heavy ram, shorter stroke)  
Equipped with box leads guides  
Uses ICE® power units, drive caps and leads  
Swinging, fixed and sliding leads available  
Spotters available for precise pile manufacturing  
Automatic or manual operations

## WORKING SPECIFICATIONS

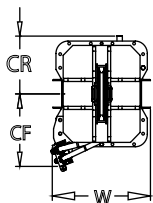
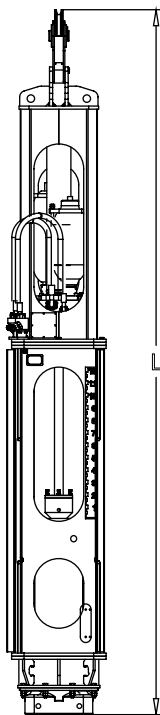
Ram weight	15,400 lbs	7 tonne
Maximum energy	61,600 ft-lbs	82 400 Nm
Minimum energy	10,120 ft-lbs	13 700 Nm
Stroke range	0.7-4 ft	200 - 1200 mm
Blows per minute	40-100	

## WEIGHTS

Hammer with sheave & cap	26,000 lbs	11 795 kg
Hydraulic hose with oil (60 m)	1,700 lbs	770 kg
Pile insert (uses any ICE insert)	DCC-20	
Pile insert weight	1,590 lbs	720 kg
Operating weight with drive cap	29,290 lbs	13 285 kg

## DIMENSIONS

Hammer length (L)	21-3 ft-in	6 460 mm
Length with drive cap above	22-8 ft-in	6 910 mm
Overall width (W)	44 in	1 120 mm
Standard box leads	32 in	814 mm
Overall depth (CR + CF)	35 in	890 mm
Center line to rear (CR)	17.5 in	445 mm
Center line to front (CF)	17.5 in	445 mm



## STANDARD POWER UNIT - ICE® 230G POWER UNIT

Engine	CAT C6.6	
	Tier 3	Stage IIIA
EPA/EU standard	Tier 3	Stage IIIA
Power	225 HP	168 kW
Flow (no load) for IP7	50 gpm	192 lpm
Max. pressure for IP7	4,500 psi	275 bar
Weight	9,310 lbs	4 225 kg
Length	110 in	2 800 mm
Height	77 in	1 960 mm
Width	58 in	1 475 mm



DESIGNED AND MANUFACTURED IN USA BY ICE®

WORLD LEADER IN COST-EFFECTIVE FOUNDATION EQUIPMENT SINCE 1974.

Constant improvement and engineering progress make it necessary that ICE®, Inc reserve the right to make specification changes without notice. Please consult ICE® for the latest available information. ©International Construction Equipment, Inc. All rights reserved. January 2015.