



ICE[®] FIXED, EXTENDED LEADS

WWW.ICEUSA.COM

Fixed, extended leads extend above the boom-point. They are connected to the boom-point with a swivel connection to allow movement in the fore-aft and side-to-side directions. A spotter connects the bottom of the leads to the front of the crane. A headblock directs the crane lines over the top of the leads. A rooster sheave at the boom-point guides the lines to the headblock.

Extended leads require only a two-line crane (pile & hammer) although a third auxiliary line may be used if desired. Excellent speed, control and accuracy are possible in positioning the leads. Side-to-side as well as fore and aft adjustment is possible. A shorter boom may be used. However, extended leads are more expensive and require more time to set up.

COMPONENTS

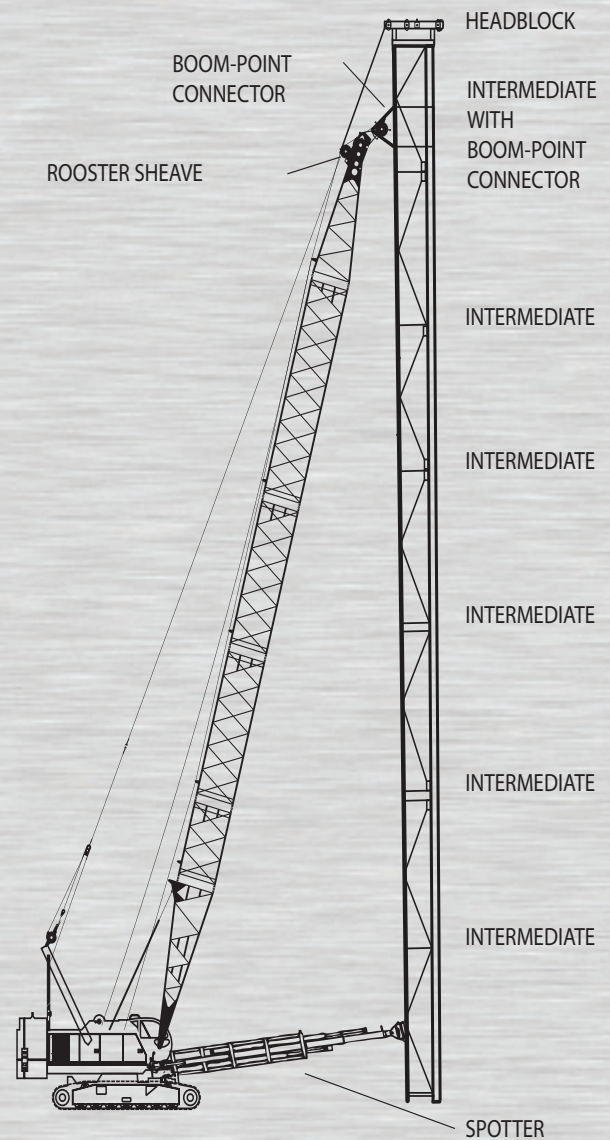
ICE[®] fixed extended leads are assembled from several components 4, 8, 16 or 40-foot intermediate sections, a headblock, a boom-point connector, a rooster sheave and a spotter.

Various intermediate sections have the boom-point connection positioned to allow vertical positioning of the leads. Multiple intermediate sections may be used both above and below the section to allow complete flexibility in boom and lead lengths.

The boom-point connector attaches the boom-point intermediate section to the boom-point of the crane. The connector permits full fore-aft and side-to-side movement.

The headblock, which carries the crane lines over the top of the leads, is available with either 4 or 6 sheaves to handle either 2 or 3 lines. An optional auger side-sheave is available.

Model 101, 155 or 225 spotters are available to position the bottom of the leads.



Headblock with auger bracket



Rooster sheave

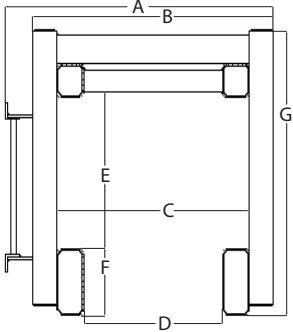
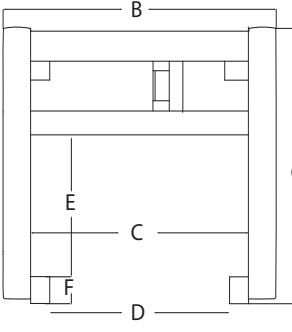


Boom point connector



ICE[®] FIXED, EXTENDED LEADS

WWW.ICEUSA.COM

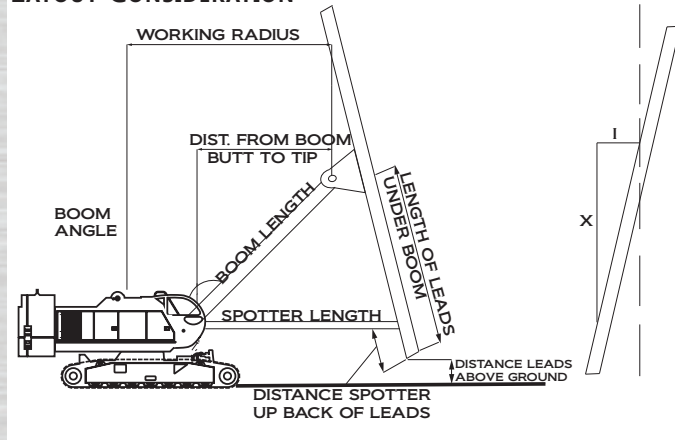
	20 in. leads	26 in. leads	32 in. leads	42 in. leads		36 in. leads
A	39.5	45.5	52.5	68.5	B	35.5
B	35.5	41.5	48.5	64.5	C	43
C	28.5	34.5	40.5	54.5	D	26
D	20.5	26.5	32.5	42.5	E	21
E	18.8	20.8	31	35	F	6
F	8	8	8	8	G	62
G	34.1	36.1	48.6	53.8		

Fixed, extended leads components	26 in	32 in	36 in
4' Intermediate section	570	-	-
8' Intermediate section	947	1,427	1,520
16' Intermediate section	1,660	2,648	3,272
40' Intermediate section	4,146	6,353	7,596
2' Fixed boom-point section	670	-	-
3' Fixed boom-point section	-	1,563	-
40' Fixed boom-point section	-	9,157	11,070
Boom-point connector - 2 axis	1,150	1,150	1,150
Roosted sheave (3 lines x 8" sheaves) - 2 axis	150	150	150
Roosted sheave (3 lines x 8" sheaves) - 3 axis	200	200	200
Roosted sheave (3 lines x 18" sheaves) - 2 axis	500	500	500
Headblock (4 sheaves for 2 lines)	1,200	1,400	1,490
Headblock (6 sheaves for 3 lines)	1,330	1,530	1,620
Headblock with auger bracket (2 lines plus auger line)	1,750	2,000	-
Side auger guides (weight per foot)	33	33	33
Connecting bolts (weight per connection)	13	28	37

CAUTION

ICE[®] leads are designed and built for normal hammers piles and driving conditions. If unusual hammers, piles or driving conditions are encountered or if any question about specific job situation arises, contact ICE before proceeding with pile driving operations.

LAYOUT CONSIDERATION



Pile gates	26 in	32 in
Pile gate arms without rollers	800	1,000
Rollers for 12" pile - set of 8	280	-
Rollers for 14" pile - set of 8	240	-
Rollers for 16" pile - set of 8	200	320
Rollers for 18" pile - set of 8	160	280
Rollers for 20" pile - set of 8	-	240
Rollers for 22" pile - set of 8	-	200
Rollers for 24" pile - set of 8	-	160

INTERNATIONAL CONSTRUCTION EQUIPMENT, INC.

301 WAREHOUSE DRIVE
 MATTHEWS, NC 28104
 888 ICE-USA1 | WWW.ICEUSA.COM