

ICE® Model 22D Hydraulic Vibratory Driver/ Extractor with Model 350T Power Unit



WWW.ICEUSA.COM
888-ICE-USA1

Design combines high eccentric moment (2,200 in-lbs, 25 kg-m) and suspended weight with clamp under 10,500 lbs

Lighter weight for increased reach or use with smaller cranes

Reduced height for better access in low-overhead situations

Up to 100 tons (1000 kN) line pull for extraction

Tier 4 CAT engine meets all latest EPA & EU emission regulations.

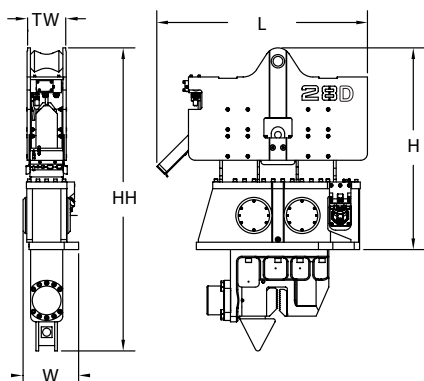


ICE Model 22D Vibratory Pile Hammer

Eccentric moment	2,200 in-lbs	25 kg-m
Maximum frequency	1800 vpm	
Driving Force	104 tons	925 kN
Centrifugal force	100 tons	890 kN
Amplitude (free w/o clamp)	1 in	25 mm
Standard line pull for extracting	100 tons	490 kN
Maximum line pull for extracting	100 tons	490 kN
Weight (no clamp or hoses)	7,365 lbs	3121 kg
Non-vibrating Weight	2,120 lbs	971 kg
Height without clamp (H)	82 in	1915 mm
Length (L)	77 in	2000 mm
Width (W)	21 in	527 mm
Throat width (TW)	14.25 in	362 mm
Hydraulic hose length	150 ft	45 m
Hydraulic hose weight	1,425 lbs	646 kg
Height with sheeting clamp (HH)	110 in	2795 mm
Weight with sheeting clamp & 1/2 hoses	10,275 lbs	4,442 kg
Height with beam & caisson clamps	115 in	2750 mm
Weight with beam, caisson clamps & 1/2 hoses	12,685 lbs	5535 kg

ICE Model 350T Power Unit

Engine	Caterpillar C9.3	
EPA/EU Emissions rating	Tier 4	Stage IV
Power	350 HP	261 kW
Operating speed	1950 rpm	1850 rpm
Maximum motors pressure	5500 psi	380 bar
Motors flow (no load)	100 gpm	385 lpm
Clamp pressure	4500 psi	310 bar
Clamp flow	6 gpm	20 lpm
Weight (w/ full fluid & 1/2 fuel)	11500 lbs	5220 kg
Length	160 in	4070 mm
Width	63 in	1600 mm
Height	87 in	2200 mm
Hydraulic oil capacity	275 gal	1040 liters
Fuel Capacity	118 gal	445 liters



DESIGNED AND MANUFACTURED IN USA BY ICE®

WORLD LEADER IN COST-EFFECTIVE FOUNDATION EQUIPMENT SINCE 1974.

Constant improvement and engineering progress make it necessary that ICE®, Inc reserve the right to make specification changes without notice. Please consult ICE® for the latest available information.

ICE® Model 22D Hydraulic Vibratory Driver/ Extractor with Model 350T Power Unit



WWW.ICEUSA.COM
888-ICE-USA1

Patented Dual-pull™ suppressor provides maximum vibration isolation during driving and light extraction combined with high pull capability for tough extraction jobs.

350 HP (261 kW) CAT C9 meets EPA Tier 4/EU Stage IV engine emission regulations.

Optional 2,970 lbs (1345 kg) of bias weight increases pile penetration rates in difficult soils.

Environmentally friendly Chevron Clarity® non-toxic, biodegradable hydraulic oil.

Maximum efficiency and reliability ensured by our open-loop hydraulic system. Highest quality, reliable piston pumps and motor.

Remote-control pendant for vibrator and clamp with emergency stop. Engine speed control for fuel efficiency.

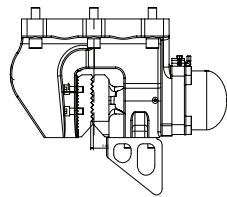
Full range of clamps available for sheet piling, H-Beams, pipe & caissons and timber & concrete piles.

Adaptable for underwater, low headroom or box leads operation.

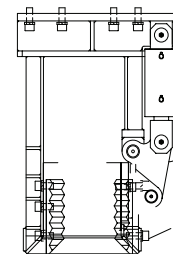


Clamps & Accessories

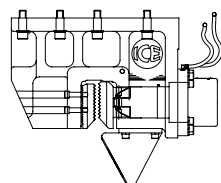
ICE Model 95 Sheeting Clamp		
Clampng Force	100 tons	890 kN
Weight	1150 lbs	522 kg



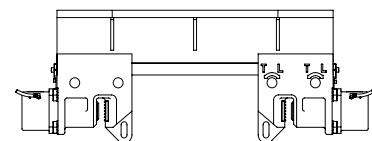
ICE Model 40 Wood Concrete and Pipe Clamp		
Clampng Force	40 tons	355 kN
Weight	3220 lbs	1460 kg



ICE Model 140C Sheeting Clamp		
Clampng Force	140 tons	1245 kN
Weight	2200 lbs	1000 kg



ICE 5' Beam and Two Model 105 Clamps		
Clampng Force	220 tons	1960 kN
Weight	3255 lbs	1475 kg



Model 22D Accessories

- 10' Clamp extension
- 900 Turning plate
- Bias weights
- Vibrator stand
- Wireless remote



DESIGNED AND MANUFACTURED IN USA BY ICE®

WORLD LEADER IN COST-EFFECTIVE FOUNDATION EQUIPMENT SINCE 1974.