

# ICE® Model 28D Hydraulic Vibratory Driver/ Extractor with Model 350T Power Unit



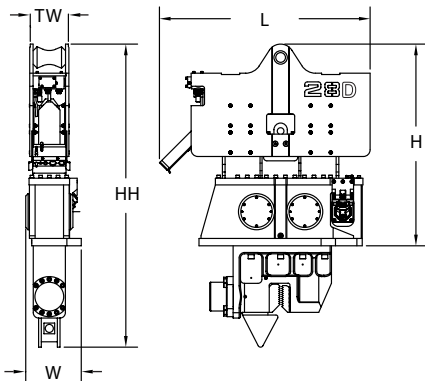
WWW.ICEUSA.COM  
888-ICE-USA1

Design combines high eccentric moment and suspended weight with clamp under 10,500 lbs (4800 kg)  
Lighter weight for increased reach or use with smaller cranes  
Up to 100 tons (1000 kN) line pull for extraction  
Tier 4 CAT engine meets all latest EPA & EU emission regulations.



## ICE Model 28D Vibratory Pile Hammer

Eccentric moment	2,800 in-lbs	32 kg-m
Maximum frequency	1700 vpm	
Driving Force	120 tons	1057 kN
Centrifugal force	115 tons	1023 kN
Amplitude (free w/o clamp)	1.2 in	29 mm
Standard line pull for extracting	100 tons	1000 kN
Maximum line pull for extracting	100 tons	1000 kN
Weight (no clamp or hoses)	7,480 lbs	3395 kg
Non-vibrating Weight	2,620 lbs	1190 kg
Height without clamp (H)	82 in	2075 mm
Length (L)	77 in	1940 mm
Width (W)	21 in	530 mm
Throat width (TW)	14.25 in	362 mm
Hydraulic hose length	150 ft	45 m
Hydraulic hose weight	1,425 lbs	646 kg
Height with sheeting clamp (HH)	120 in	3040 mm
Weight with sheeting clamp & 1/2 hoses	10,390 lbs	4,715 kg
Height with beam & caisson clamps	113 in	2855 mm
Weight with beam, caisson clamps & 1/2 hoses	12,800 lbs	5810 kg



## ICE Model 350T Power Unit

Engine	Caterpillar C9	
EPA/EU Emissions rating	Tier 4	Stage IV
Power	350 HP	261 kW
Operating speed	1850 rpm	1850 rpm
Maximum motors pressure	5500 psi	380 bar
Motors flow (no load)	95 gpm	365 lpm
Clamp pressure	4500 psi	310 bar
Clamp flow	6 gpm	20 lpm
Weight (w/ full fluid & 1/2 fuel)	11500 lbs	5220 kg
Length	160 in	4070 mm
Width	63 in	1600 mm
Height	87 in	2200 mm
Hydraulic oil capacity	275 gal	1040 liters
Fuel Capacity	118 gal	445 liters



DESIGNED AND MANUFACTURED IN USA BY ICE®

WORLD LEADER IN COST-EFFECTIVE FOUNDATION EQUIPMENT SINCE 1974.

Constant improvement and engineering progress make it necessary that ICE®, Inc reserve the right to make specification changes without notice.  
Please consult ICE® for the latest available information.

# ICE® Model 28D Hydraulic Vibratory Driver/ Extractor with Model 350T Power Unit



WWW.ICEUSA.COM  
888-ICE-USA1

Patented Dual-pull™ suppressor provides maximum vibration isolation during driving and light extraction combined with high pull capability for tough extraction jobs.

350 HP (261 kW) CAT C9 meets EPA Tier 3/EU Stage IIIA engine emission regulations.

Optional 2,970 lbs (1345 kg) of bias weight increases pile penetration rates in difficult soils.

Maximum efficiency and reliability ensured by our open-loop hydraulic system. Highest quality, reliable piston pumps and motor.



Remote-control pendant for vibrator and clamp with emergency stop. Engine speed control for fuel efficiency.

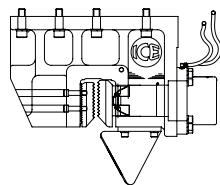
Full range of clamps available for sheet piling, H-Beams, pipe & caissons and timber & concrete piles.

Adaptable for underwater, low headroom or box leads operation.

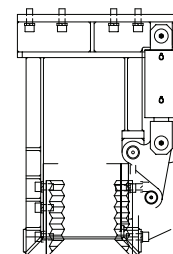
Environmentally friendly Chevron Clarity® non-toxic, biodegradable hydraulic oil.

## Clamps & Accessories

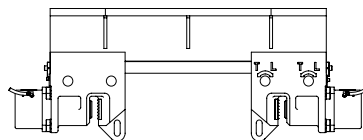
ICE Model 140C Sheeting Clamp			
Clampng Force	140 tons	1245 kN	
Weight	2200 lbs	1000 kg	



ICE Model 40TCP Wood, Concrete and Pipe Clamp			
Clampng Force	40 tons	355 kN	
Weight	3220 lbs	1460 kg	



ICE 5' Beam and Two Model 105 Clamps			
Clampng Force	220 tons	1960 kN	
Weight	3255 lbs	1475 kg	



### Other Model 28D Accessories

- 10' Clamp extension
- 90° Turning plate
- Bias weights
- Vibrator stand
- Wireless remote



DESIGNED AND MANUFACTURED IN USA BY ICE®

WORLD LEADER IN COST-EFFECTIVE FOUNDATION EQUIPMENT SINCE 1974.

©International Construction Equipment, Inc. All rights reserved. January 2015.